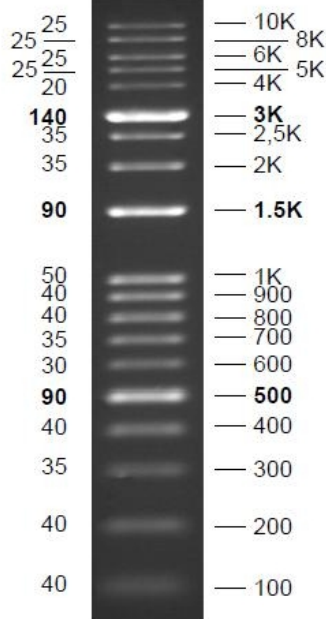


DNA Ladder – one for all Prod. No: 3900005, 500µl

Description/Features:

An unique combination of a number of proprietary plasmids digested with appropriate restriction enzymes and PCR products to yield 19 fragments, suitable for use as molecular weight standards for agarose gel electrophoresis. The DNA includes fragments ranging from 100-10,000 base pairs. The 500, 1.5K and 3K bands have increased intensity to serve as reference points. The approximate mass of DNA in each band is provided (0.5 µg a load) for approximating the mass of DNA in comparably intense samples of similar size.

DNA Mass
(ng/5µl)



Base Pairs

Preparation:

PCR products and double-stranded DNA digested with appropriate restriction enzymes, are phenol extracted and equilibrated to 10 mM Tris-HCl (pH 8.0) and 1 mM EDTA.

Usage: 5 µl / lane

Concentration: 0.172 µg/µl

Tracking Dye: Containing bromophenol blue as the tracking dyes

Number of bands: 19 fragments

Loading: 0.5 - max. 0.8 µg / lane in a 1.5 - 2.5 % Agarose Gel

Transportation: Shipped on blue ice or room temperature

Storage: at -20°C for 24 months

Ordering information:

1.5 % TAE agarose gel

Pod. No	Description	Quantity
3900005	DNA Ladder - one for all	86 µg/500µl
3900006	DNA Ladder - one for all	5 x 86 µg