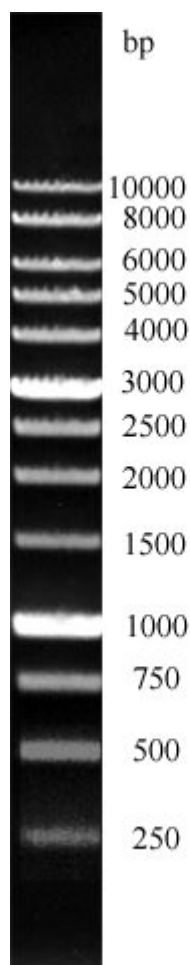


## 1kb DNA Ladder BLUE (ready-to-use) Prod. No: 3905-105, 50 µg / 500 µl



**Features:** 1000 bp / 1 kb DNA Marker from Bioswisstec is composed of 13 individual DNA fragments which are re-dissolved in storage buffer.

**Description/Preparation:** The 1 kb BLUE DNA Marker is a pre-mixed, ready-to-load molecular weight marker containing a dye which serves as visual aids to monitor the progress of migration during agarose gel electrophoresis. The DNA marker consists of proprietary plasmids which are digested to completion with appropriate restriction enzymes to yield 13 bands suitable for use as molecular weight standards for agarose gel electrophoresis that range in size from 250 to 10.000 base pairs. The 1.000 bp and 3.000 bp fragments have increased intensity relative to the other bands on ethidium bromide-stained agarose gels and serve as reference indicators. All fragments are blunt-ended.

**Usage:** 0.25 - max. 1 µg/lane

**Concentration:** 0,1 µg/µl

**Storage Buffer/Tracking Dye::** 10 mM Tris-HCl (pH 8.0), 1.0 mM EDTA, 50mM NaCl, optimized blue loading dye

*Gel-picture: 1 µg of 1000 bp/1 kb DNA Ladder visualized by ethidium bromide staining on 1,0 % TAE agarose gel*

**Number of bands:** 13 fragments

**Number of bands and approx. DNA Mass:**

base pairs	250	500	750	1000	1500	2000	2500	3000	4000	5000	6000	8000	10000
DNA mass ng	20	30	60	210	50	60	70	200	60	60	60	60	60

**Loading:** 0.25 - max. 1.0 µg/ lane in 1.0 - max. 2.0 % Agarose

**Transportation:** shipped on blue ice or room temperature

**Storage:** at -20°C for 24 months

**Ordering information:**

Prod. No	Description	Amount
3905-105	1000 bp / 1 kb BLUE DNA Ladder	50 µg/500 µl
3905-125	1000 bp / 1 kb BLUE DNA Ladder	5 x 50 µg